



4 DRUM BUND 295653



"The 4 drum bunding tray with pallet inserts is the ideal solution to the safe storage of drums, cans and containers. It is manufactured from super tough polyethylene and designed to hold 220L of fluid. Length: 128cm, Width: 128cm, Height: 20cm, Capacity: 220L, Weight: 32kg"

2 DRUM BUND 295652



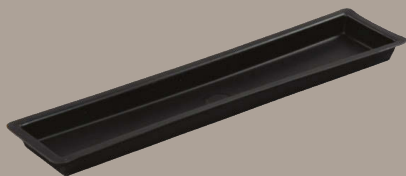
"The 2 drum bunding tray with pallet insert is the ideal solution to the safe storage of drums, cans and containers. It is manufactured from super tough polyethylene and designed to hold 220L of fluid. Length: 128cm, Width: 60cm, Height: 50cm, Capacity: 220L, Weight: 20kg"

DRIP TRAY PACKAGE 295291



Includes 15 litre drip tray, 20 litre drip tray and the 45 litre drip tray. Made of rotational moulded Medium Density Polyethylene (MDPE) and is robust & durable UV stabilised (UV8 food grade standard). Withstands most chemicals and acids. Use for oil changes, coolant drops, gearbox and engine overhauls, batteries storage & much more.

PARTS TRAY LARGE 295020



"The Large Parts Tray is very unique in design as it is only 210mm wide which allows versatility when storing small parts or tools. It is made from super tough polyethylene. Dimensions 91cm x 21cm x 6cm Weight 2kg"

SINGLE BUNDING TRAY 295036



Used for storage of one 205 Litre drum The Single Bunding Tray is EPA compliant with a capacity of 260 litres. Dimensions L97cm x W85cm x H35cm Weight 25kg

MAXI BUNDING TRAY 270 LITRE 295015



The Maxi tray is rotational moulded of Medium Density Polyethylene (MDPE) and is robust and durable, UV stabilised (UV8 food grade standard) and withstands most chemicals and acids. EPA compliant with a capacity of 250 litres Dimensions L127cm x W75cm x H27cm Weight 10kg

TRIPLE BUNDING TRAY 230 LITRE 295052



"The Triple bunding tray holds up to 3 x 205L drums and it the ideal tray for you workshop. Dimensions L190cm x W75cm x H18cm Weight 10kg"

MEGA BUNDING TRAY 295012



The Mega Bunding Tray is the largest in the Tidy Trays range and designed to fit 4 x 205L drum. It also boasted enough size to house a standard pallet. With a 230L capacity and made from robust and durable polyethylene the Mega Tray is ideal tray for all types of industries. Dimensions L131cm x W123cm x H18cm Weight 10kg

DRIP TRAY SMALL 15 LTR 295009



"Great with many applications, use for oil changes, coolant drops, parts storage, gearbox and engine overhauls store a battery & much more. L52cm x W36cm x H8cm Weight 1kg"

**DRIP TRAY-MEDIUM 20L
295011**



"Made of rotational moulded Medium Density Polyethylene (MDPE) and is robust & durable. L61cm x W41cm x H10cm Weight 2kg"

**DRIP TRAY-LARGE 45 LTR
295010**



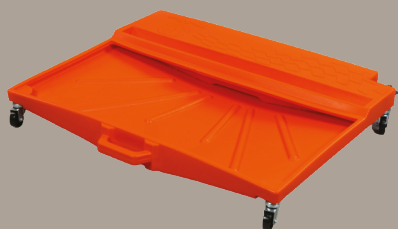
"UV stabilised (UV8 food grade standard) withstands most chemicals and acids. L81cm x W61cm x H10cm Weight 4kg"

**OIL DRAIN PAN 16 LITRE
295087**



"The New Oil Drain Pan is used for draining oil or coolant, key features include heavy duty handle for easy transportation and finger grips for decanting. Perfect for workshops or mobile servicing. Dimensions L65cm x W45cm x H12cm Weight 5kg"

**TIP & RUN COOLANT RECOVERY TRAY
295032OR**



"Tip & Run" The ultimate fluid recovery tray, simply drop up to 15L of fluids into the catchment area, pull it out, pick it up and walk away. The Tip & Run is only 140mm in height and can fit under the majority of cars without the use of a jack and stands. The Tip & Run comes standard with a 3/4bsp tap in the bottom corner so if you chose to re-use or empty the fluid you can do so with ease. Dimensions L91cm x W50cm x H140cm Weight 8kg"

**TIP N RUN 25 LITRE BLACK
295000BLK**



"The 25 litre Tip & Run bunding tray is the latest secondary spill containment innovation. Manufactured from durable polyethylene plastic for long life, the 25 litre Tip & Run is fitted with roller casters and a dispensing tap for handling and storage. Dimensions L67cm x W50cm x H26cm Weight 6kg"

**TRUCK OIL DRAIN PAN 65 LITRE WITH WHEELS
295426**



"Made of rotational moulded Medium Density Polyethylene (MDPE) and is robust & durable. 65 Litre capacity Drain tray fitted with rear wheels for easier movability. Used for draining oil or coolant from light or heavy duty trucks. Dimensions L77cm x W58cm x H20cm Weight 10kg"

**DRAIN N DRUM ORANGE
295001OR**



"DRAIN N DRUM sits on top of your 205 litre drum. Purpose built to drain used oil or liquids into a 205 litre drum. Dimensions 61cm x 61cm x 11cm Weight 2kg"

**205 DRUM HAT
295086**



The Drum Hat allow storage of drums outside and prevents contamination caused by rust, dirt and moisture. Excellent resistance to most chemicals and acids suit standard 200L steel drums. Weight 2kg

**200L DRUM
200200BL**



The 200L Open Top Plastic Drum is the perfect container for products that need to be stored in bulk. With dimensions comparable to a steel drum, the 200L Plastic Drum can be fitted with a plastic Standard removable lid with gasket and quick release lever locking ring Dimensions Diameter x 59cm Height x 90cm Weight 10kg.

**60L DRUM
200300BL**



The 60L Open Top Plastic Drum is the perfect container for products that need to be stored in bulk. With dimensions comparable to a steel drum, the 60L Plastic Drum can be fitted with a standard removable lid with gasket and quick release lever locking ring. Dimensions Diameter 42cm x Height 60cm Weight 6kg

**ENGINE STAND TRAY
295017**



Engine stand tray suitable for T-Frame stands. L 87cm x W62cm x H8cm Weight 5kg

**AUTOMATIC TRAY
295218**



Tapered tray can be used as a funnel for oil drops. L68cm x W59cm x H26cm Weight 4kg

**205 LITRE DRUM LIFTER CLAMP
295077**



"Note : Drum lifting clamps must only be used with drums that have lids attached. W.L.L. 500 kg. AS4991-2004 Will lift one 205 litre drum with forklift or engine crane. Carton Dimensions L76cm x W11cm x H15cm Weight 5kg"

**JUMBO FUNNEL ORANGE
2950690**



"Great with many applications, use for oil changes, coolant drops, parts storage, gearbox and engine overhauls store a battery & much more. L52cm x W36cm x H8cm Weight 1kg"